



# CERTIFICATE OF ANALYSIS

**Company:** Lamoille Valley Extraction  
Solutions DBA Zen Valley CBD  
540 Harrel St  
Morrisville, VT 05661

**Customer ID:** 200210-1  
**Date Received:** 07/20/20  
**Report Date:** 07/24/20

**Sample ID:** 100107 Batch 18 150mg Salve  
**Lot Number:** 1007107 Batch 18  
**Matrix:** Other

**Analyst:** SCG  
**Analyzed:** 07/22/20  
**Report ID:** C200720AC

## Cannabinoid Summary

Cannabinoid Profile	LOQ (mg/g)	Concentration (mg/g)	Weight (%)
CBDVA	0.0005	<LOQ	<LOQ
CBDV	0.0012	<LOQ	<LOQ
CBDA	0.0008	0.80	0.08
CBGA	0.0008	<LOQ	<LOQ
CBG	0.0019	0.14	0.01
CBD	0.0019	6.32	0.63
THCV	0.0021	<LOQ	<LOQ
CBN	0.0013	<LOQ	<LOQ
Δ9-THC	0.0020	0.27	0.03
Δ8-THC	0.0019	<LOQ	<LOQ
THC-A	0.0034	<LOQ	<LOQ
CBC	0.0024	0.39	0.04
<b>Total THC</b>		0.27	0.03
<b>Total CBD</b>		7.02	0.70
<b>Total Cannabinoids</b>		7.93	0.79

0.03%  
Total THC

0.70%  
Total CBD

0.79%  
Total  
Cannabinoids

0.03%  
Δ9-THC

NA  
Percent  
Moisture

1 : 26.0  
THC : CBD  
Ratio

Cannabinoids Methodology: High Performance Liquid Chromatography (HPLC) using PerkinElmer Flexar™ with Photo Diode Array Detector (PDA)

Total CBD and total THC are calculated values, to account for assumed decarboxylation from the acid form (THCA or CBDA) to the neutral form, causing weight loss of the acid group. These values are calculated as follows:

Total THC = (THCA x 0.877) + Δ9-THC

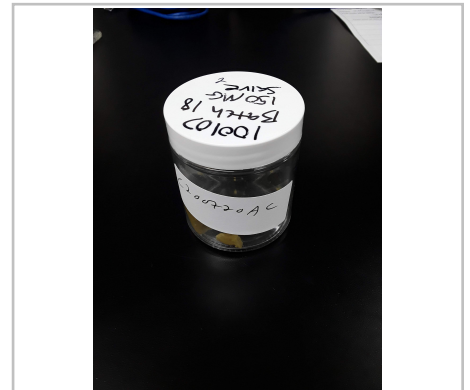
Total CBD = (CBDA x 0.877) + CBD

Ratio of Total CBD: Total THC

Reagent Blanks: < LOQs for all analytes

LOQ = The lowest quantity that this method can reliably detect. Any cannabinoid that was not detected is assumed to be less than the stated LOQ (<LOQ).

All results reflect dry weight of material, based on % moisture of the sample.



*This report shall not be reproduced except in full without approval of the laboratory. This is to provide assurance that parts of a report are not taken out of context. Results apply to the samples as received.*